

Name _____

Date _____

Use with textbook page 27.

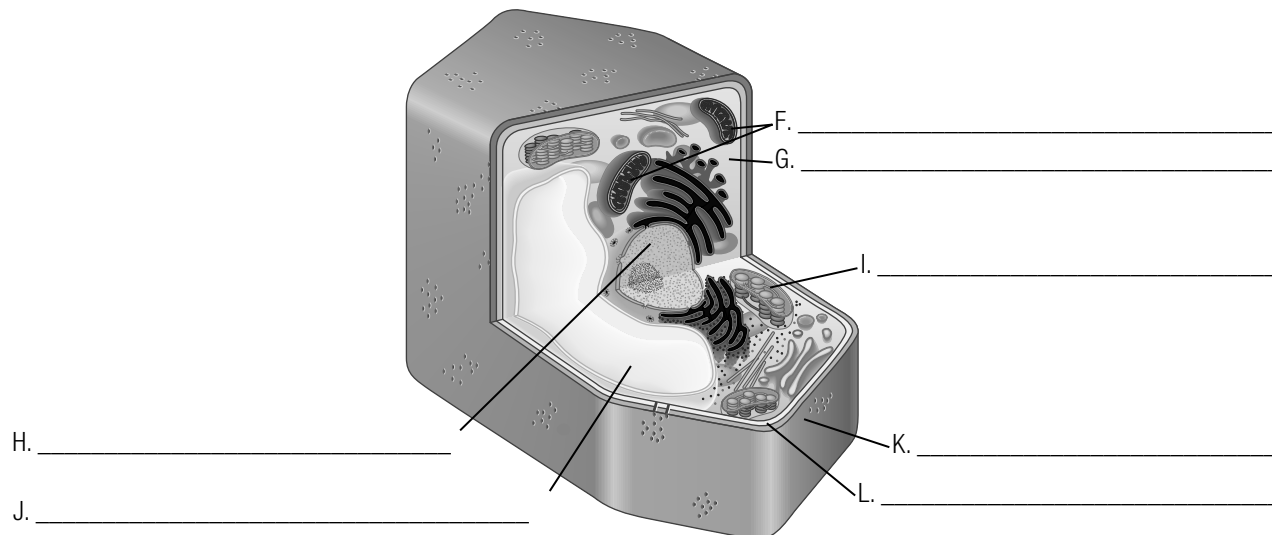
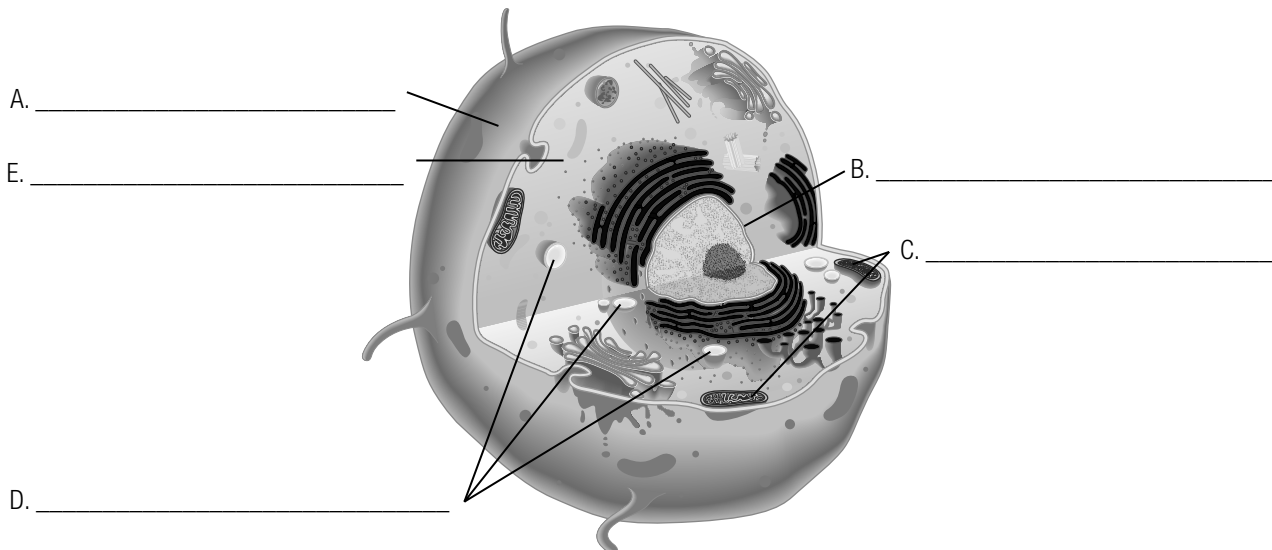
Parts of cells

Vocabulary

cell membrane
nucleus
cell wall
chloroplast

vacuole
vacuoles
cytoplasm
mitochondria

Use the terms in the box to label the parts of an animal cell and a plant cell. Terms may be used more than once.



Use with textbook pages 24–29.

Inside a cell

Vocabulary

bacteria	living thing
cell theory	mitochondria
cell membrane	organelle
cell wall	prokaryotic
chloroplasts	nucleus
cytoplasm	vacuoles
eukaryotic	viruses

Use the terms in the vocabulary box to fill in the blanks. Each term may be used only once. You will not need to use all the terms.

1. A(n) _____ is a cell structure in which functions are carried out to ensure the cell's survival.
2. Each cell is surrounded by a _____ that separates the interior of the cell from its surroundings.
3. Within the cell is a jelly-like substance called _____.
4. The _____ is the organelle that controls all the activities within the cell.
5. The _____ are the energy producers in the cell.
6. _____ are temporary storage compartments that sometimes store waste.
7. The _____ is a tough, rigid structure that surrounds the cell membrane and protects the cell.
8. The _____ trap the energy from the Sun and change it into chemical energy.
9. Plant and animal cells are examples of _____ cells.
10. _____ cells are cells that do not have organelles with membranes around them.
11. _____ are examples of prokaryotic cells that can cause disease.
12. _____ are examples of non-living things that are able to reproduce.