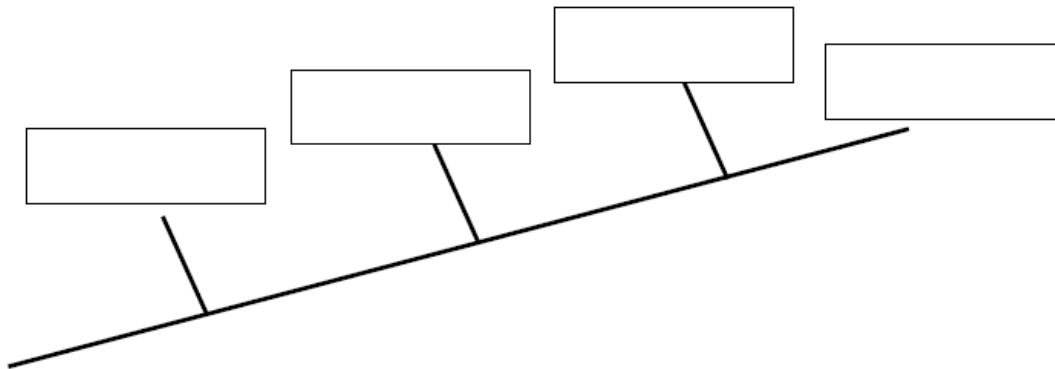


1. Fill in the following table. Mark an "X" if an organism has the trait.

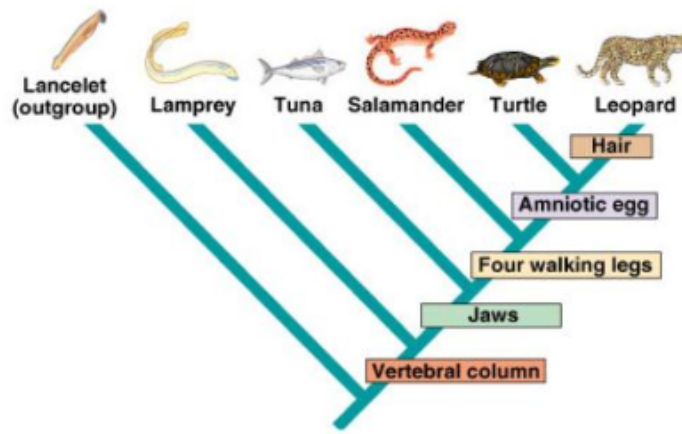
	cells	legs	6 legs	wings
Worm				
Spider				
Carpenter Ant (black)				
Fly				

2. Add each of these organisms to the cladogram below: worm, spider, ant, fly
3. USING complete sentences, explain why you put each organism where you did on the cladogram.



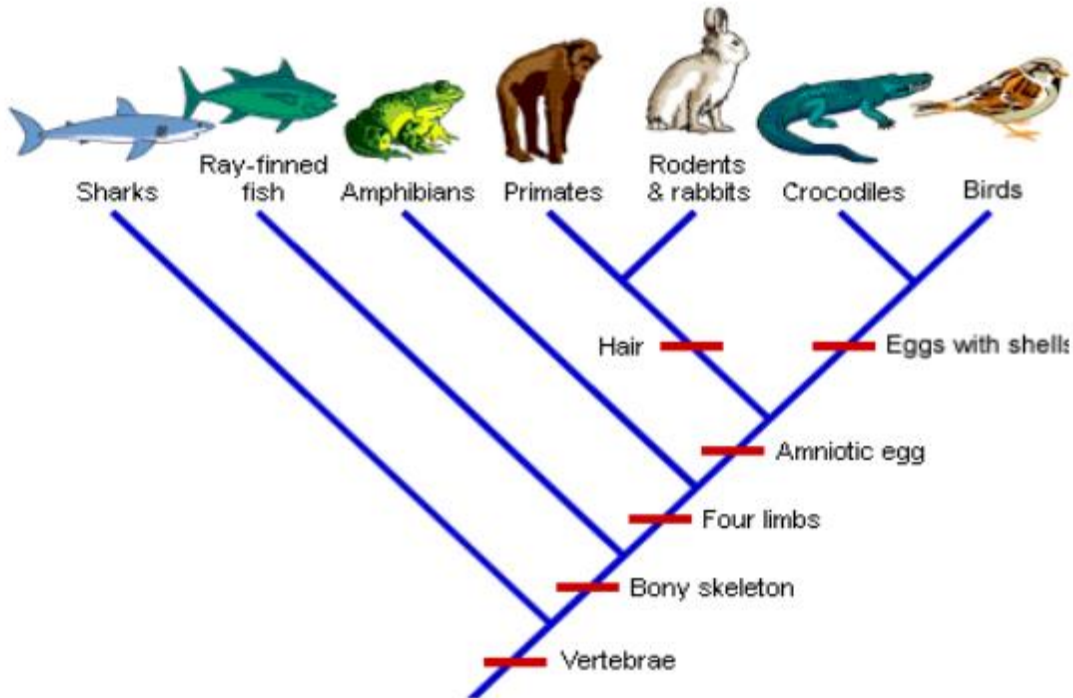
4. On the cladogram above, add traits that make the organisms different from each other.
5. According to your cladogram, which two species are more closely related: worms and spiders or worms and ants? How do you know?
6. According to your cladogram, what species are flies most closely related to? How do you know?

1. What trait separates Lampreys from tuna on this cladogram? _____
2. What separates a salamander from a turtle? _____
3. Which organism is most related to the leopard? _____
4. What 4 traits do these two organisms share? _____



5. Which organism will have DNA most similar to the turtle? _____
6. Which organism's DNA will differ the most from the leopard? _____

Directions: Use the cladogram below to answer the questions on the backside of this worksheet



7. What trait separates amphibians from primates on this cladogram? _____
8. What separates rabbits and primates from crocodiles on this cladogram? _____
9. Which organism is most related to the bird on this cladogram? _____
10. What 5 traits do these two organisms share? _____
11. Which organism will have DNA most similar to the bird? _____
12. Which organism's DNA will differ the most from the bird? _____