

Blk 2 Test on Mon. Jan 14, 2019
Blk 8 Test on Tues. Jan 15, 2019

Mapping Test Study Guide

- p.111 1. Meridians are lines of _____
- p.111 2. Parallels are lines of _____
- p.111 3. At which latitude is south pole?
- p.111 4. Maximum degrees of latitude is _____
- p.110 5. Enomonic projection is made as if _____
- p.110 6. Polyconic projection is best for _____
and is nearly _____ in all respects.
- p.109 7. Mercator projections show earth on _____
- p.115 8. Contour lines show 3 things
1. _____
2. _____
3. _____
- p.115 9. Contour interval is _____
- p.119 10. How do you know the direction a river flows?
- p.116 11. What do hachure marks (depression contours) show?
- p.118 12. If contour lines are close together the land is _____
- p.118 13. If contour lines are far apart the land is _____

14. Calculate scale (*remember CONVERT to same units.)

Distance on a hiking map is 1.25 cm. The actual walking distance is 6.5 m. What is the scale?

hint: $\frac{\text{map or scale}}{\text{actual or real}}$

15. Scale is 1:4. Distance on the map is 6cm. What is the actual distance in kilometres? (*CONVERT)

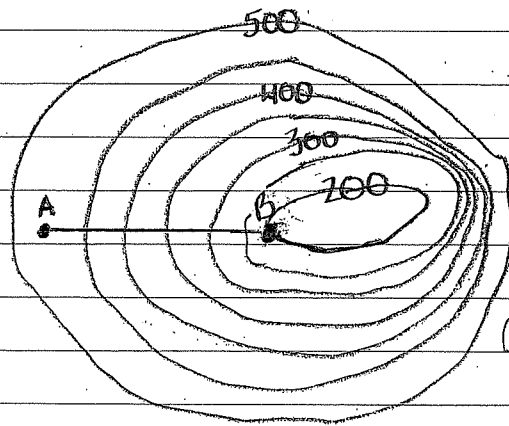
hint: $\frac{\text{map}}{\text{actual}} = \frac{\quad}{\quad}$

16. Scale is 1cm = 150m. Calculate the map distance between two cities that are 320 km apart. (*CONVERT)

hint: $\frac{\text{map}}{\text{actual}} = \frac{\quad}{\quad}$

17. Calculate gradient from A to B.

hint: $\frac{\text{elevation change}}{\text{distance}}$



Contour = 50m

Map scale: $\frac{\quad}{\quad}$
50km